

Welcome to the
**CSCB Webinar:
ECCC Regulatory Compliance
for the Vehicle and Engine
Emission Regulations**

October 9, 2025

Move Forward! Creating a Better Future for Customs Brokers

The following information is provided for informational purposes only and is not intended as, nor should it be considered, professional advice or a substitute for conducting your own thorough research and review. Before making any decisions or taking any action based on the information provided, you should conduct your own independent investigation and/or seek professional advice from a qualified expert in the relevant field. The CSCB disclaims all liability for actions taken or not taken based on the information provided.

FEDERAL VEHICLE AND ENGINE EMISSIONS REGULATIONS

Environment and Climate Change Canada
Energy and Transportation Directorate
Transportation Division
October 2025



Environment and
Climate Change Canada

Environnement et
Changement climatique Canada

Canada 

OUTLINE

- ECCCC Organization
 - Vehicle and Engine Regulations
 - Canadian Environmental Protection Act
 - Off-Road Engine Regulations
 - CI-LSI Regulations Overview
 - MERV Regulations Overview
 - SSI Regulations overview
 - On-Road Vehicle and Engine Emission Regulations/Heavy-duty Vehicle and Engine Greenhouse Gas Emission Regulations
 - Questions and Closing Remarks
-

DISCLAIMER

- The following information is intended for guidance only. It does not in anyway supersede or modify the requirements of the *Canadian Environmental Protection Act, 1999* (CEPA) or the vehicle and engine emission regulations (Regulations) made under CEPA. In the event of an inconsistency between this information and CEPA and/or the Regulations, CEPA and the Regulations shall prevail.
-

Energy and Transportation
Directorate

Mark Cauchi

Electricity and Combustion
Division

Oil, Gas, and Alternative
Energy Division

Transportation Division

Cross-Sectoral Energy
Division

Stéphane Couroux

Regulatory Administration
and Data Management
Section

Andrew Giallonardo

1-844-454-9017

VehicleandEngineInfo@ec.gc.ca

Regulatory Development and
Compliance Operation
Section

Josephine Davidson

1-844-454-9017

VehicleandEngineInfo@ec.gc.ca

Vehicles and Engines
Testing for Emissions
Verification

Joanna Bellamy

Emission-Verification@ec.gc.ca

VEHICLE AND ENGINE EMISSION REGULATIONS

- Under the authority of *Canadian Environmental Protection Act, 1999* (CEPA), Environment and Climate Change Canada has implemented a series of emission regulations covering both on- and off-road vehicles and engines to address both air pollutant and greenhouse gas emissions.
 - Part 7: Controlling Pollution and Managing Wastes, Division 5: Vehicle, Engine and Equipment Emissions of CEPA establishes the authority for regulating emissions from on-road vehicles that were previously contained in the *Motor Vehicle Safety Act*. In addition, it establishes the authority for regulating emissions from engines used in off-road applications.
 - Engines used to power large marine vessels (>37 kW), aircraft and trains are covered under separate federal legislations.
 - The Federal Government shares responsibility for regulating vehicles and engines with the provinces and territories.
 - Once a vehicle is put into service, its operation is governed by provincial, territorial and aboriginal legislation and regulations. This includes inspection and maintenance programs and anti-tampering regulations which prohibit the removal or disabling of emission control devices fitted to the vehicle or engine by the original manufacturer.
-

COMPANY VS PERSON

- Section 149 of CEPA defines a company as a “person” who:
 - is engaged in the business of manufacturing* vehicles, engines or equipment in Canada,
 - is engaged in the business of selling to other persons, for the purpose of resale by those persons, vehicles, engines or equipment obtained directly from a person described in paragraph (a) or the agent of such person, or
 - imports any vehicle, engine or equipment into Canada for the purpose of sale (this includes importing equipment to lease).
- Companies must comply with the conditions under section 153 of CEPA in order to:
 - apply a national emissions mark to any vehicle, engine or equipment,
 - sell any vehicle, engine or equipment to which a national emissions mark has been applied or
 - import any vehicle, engine or equipment.
- If you are not a company, then you are a person under the act. Persons must comply with the conditions under section 154 of CEPA in order to:
 - import any vehicle, engine or equipment of a prescribed class.

**Manufacture includes any process of assembling or altering any vehicle, engine or equipment before its sale to the first retail purchaser.*

HS CODES AND ENGINE PARTS

- Importation requirements apply to regulated engines, vehicles, vessels and machines under ECCC/TD including:
 - on-road vehicles and motorcycles, as well as, on-road heavy duty engines,
 - off-road compression-ignition engines,
 - off-road small spark-ignition engines rated up to 30 kW and below 1000 cc,
 - off-road large spark-ignition engines rated above 19 kW in mobile applications,
 - spark-ignited outboard, inboard, and personal watercraft engines,
 - vessels in which a fuel line or fuel tank is installed, and
 - snowmobiles, all-terrain vehicles, utility vehicles, and off-road motorcycles.
 - Individual engine parts are not regulated under the *Canadian Environmental Protection Act, 1999* or the vehicle and engine emission regulations.
 - If there is a match in HS codes but the products are excluded from the prescribed classes of vehicles and engines and are therefore not subject to the regulations, the Exception Process *XE99 – Goods are not subject to any of the Vehicle and Engine Emission Program regulations* may be used.
-

EXCEPTIONS FOR CERTAIN IMPORTATIONS

- The general rule is that any vehicle or engine that does not meet the prescribed emission standards cannot be imported into Canada by a company or person. However, pursuant to section 155 of CEPA, this general rule does not apply to products:
 - Being used in Canada solely for purposes of exhibition, demonstration, evaluation or testing (i.e. Temporary Importation). The product must be removed from Canada or destroyed at the end of the importation period.
 - In transit through Canada, from a place outside Canada, to another place outside Canada (product must be accompanied by written evidence establishing that it will not be sold or used in Canada).
 - Imported exclusively for use by a visitor to Canada or by a person passing through Canada to another country.
-

OFF-ROAD ENGINE EMISSION REGULATIONS

- ECCC administers the following off-road engine emission regulations under the [Canadian Environmental Protection Act, 1999](#) (CEPA):
 - [Off-Road Compression-Ignition \(Mobile and Stationary\) and Large Spark-Ignition Engine Emission Regulations](#) (ORCILSIEER/CI-LSI)

Establishes emission standards for air pollutants and toxic substances from 2006 and later model year off-road mobile diesel, and stationary diesel and large mobile gasoline engines manufactured on June 4, 2021 and later such as those typically found in construction, mining, farming, and forestry machines
 - [Marine Spark-Ignition Engine, Vessel and Off-Road Recreational Vehicle Emission Regulations](#) (MERV)

Establishes emission standards for air pollutants and toxic substances from 2012 and later model year gasoline-fueled marine engines, fuel systems used in recreational marine vessels, and off-road recreational vehicles such as ATVs and snowmobiles
 - [Off-Road Small Spark-Ignition Engine Emission Regulations](#) (ORSSIEER/SSI)

Establishes emission standards for air pollutants and toxic substances from 2005 and later model year small gasoline engines such as those typically found in lawn and garden machines, small industrial machines (generator sets, welders), and in small logging machines (chainsaws, shredders)
-

**OFF-ROAD COMPRESSION-IGNITION
(MOBILE AND STATIONARY) AND
LARGE SPARK-IGNITION ENGINE
EMISSION REGULATIONS**

(CI-LSI REGULATIONS)

CI-LSI REGULATIONS

- The CI-LSI Regulations:
 - Came into force on June 4, 2021
 - Repealed and replaced Off-Road Compression-Ignition Engine Emission Regulations (CI Regulations), introduced standards for SCI and LSI engines
 - Some provisions from the CI Regulations were maintained for MCI engines
- The Regulations set out emission standards for the following types of engines:

Mobile compression-ignition (MCI) engines	Stationary compression-ignition (SCI) engines	Mobile large spark-ignition (LSI) engines
used in machinery in construction, agriculture, forestry, and industrial applications.	displacement of < 30 L per cylinder	>19 kW of power
	used to provide primary sources of electricity and power machines such as pumps and generators.	used in mobile machinery such as forklifts and ice resurfacers.
EPA Tier 4	EPA Tier 4	EPA Tier 2
Engine Class: Loose – EC15 Installed – EC16	Engine Class: Loose – EC0A Installed – EC0B	Engine Class: Loose – EC0C Installed – EC0D

- Exclusions to the prescribed engines are set out in section 5
- Flexibilities to the emission standards are outlined in sections 12 –22

REGULATORY REQUIREMENTS

- Importers and manufacturers in Canada must meet certain regulatory requirements, including:
 - Markings / Labels
 - Evidence of Conformity
 - Defect Information
 - Maintenance and Submission of Records
 - Importation Declarations
-

IMPORTATION DECLARATIONS

- The Importation Declaration, pursuant to section 44-46, may be provided in one of three ways:
 - Transactional declarations submitted directly to ECCC prior to importation.
 - Bulk declarations submitted directly to ECCC on an annual basis (for companies that import over 50 engines per calendar year). Please note that to use this method the company is required to submit a notice of intent to ECCC and be approved to submit declarations on an annual basis.
 - Single Window Initiative Integrated Importation Declaration (SWI IID) submitted to Canada Border Service Agency (CBSA).
 - Products should only be declared through one submission method.
 - Information to be provided is generally the same regardless of method
 - ECCC reviews and acknowledges that regulatory submissions have been produced in a form and manner satisfactory to the Minister; however, the department does not certify or "approve" products for importation into Canada.
 - Corrections can be submitted to VehicleandEngineInfo@ec.gc.ca
-

CI-LSI EXCEPTION PROCESS CODES

- XE02 – subject to the regulations
- XE06 – subject to the regulations however importer is approved for bulk reporting and will report this engine via their bulk declaration
- XE2N – subject to the regulations however importer is importing 9 or less engines in a calendar year for personal use (i.e. not for sale)
- XE99 – *not* subject to any of the Vehicle and Engine Emission Program regulations

Note: commodity unit count is a required field under all exception process codes.

CONFORMITY STATEMENT CODES

SWI Code	Description
ME01	<u>Replacement Engine</u> The engine is a replacement engine, defined under subsection 1(1) of the regulations, and was manufactured exclusively to replace the engine of a machine that is located in Canada
ME02	<u>Standard, Certified, or Canada-Unique Engine</u> The engine will have its manufacture completed prior to importation into Canada or for an engine that is covered by an EPA certificate, will have its manufacture completed in Canada by the addition of: <ul style="list-style-type: none">•an emission control system for exhaust emissions, or part of such a system, in a manner that conforms to the certificate and the certificate holder's installation instructions.•a complete fuel system, or part of such a system, in a manner that conforms to the certificate and the certificate holder's installation instructions.
ME03	<u>Incomplete Engine</u> The engine will have its manufacture completed in Canada in accordance with the instructions provided by the manufacturer and will when completed conform with the requirements prescribed under the regulations.
ME04	<u>Application of NEM</u> The importer is authorized to apply the national emissions mark to the engine and will apply it after importation at the location specified in their application under section 26.

ECCE ID FORM 1 – ME02

Environment and Climate Change Canada / Environnement et Changement climatique Canada | Single Window Initiative | Trans

Importation Declaration Form

(Ce formulaire est en français.)

Off-road Compression-Ignition (Mobile and Stationary) and Large Spark-Ignition Engine E

By using this form, the Importer attests that the engine(s) declared will have its manufacture completed prior to importation into Canada or the manufacture completed in Canada will be limited to either the addition of:

- an emission control system for exhaust emissions, or part of such a system, or,
- a complete fuel system, or part of such a system, in a manner that conforms to the certificate and the certificate holder's installation instructions.

Send completed forms to the
email: infovehiculeetmote
fax: 819-938-4197
mail: 351 Saint Joseph B
 Gatineau QC K1A

Part 1: Importer (see instruction pages)

A) Name of Importer	B) Business Number (9 digits)	C) Phone Number
E) Civic Address		F) Mailing Address (if different from the street address)

Part 2: Imported Products Information (see instruction pages)

Product Information		1	2
Engine	Manufacturer		
	Make		
	Model		
	Model Year		
	Type ¹		
	Expected Importation Date (e.g. 31-Dec-2021)		
	Quantity		
	Exhaust Family		
	Evaporative Family ²		
	Unique Identification Number(s)		
Compliance Statement Number ¹			
Alternative Emission Standard ³			
Machine	Manufacturer		
	Make		
	Model		
	Type		
Evidence of Conformity	Evidence of Conformity Statement ¹		
	Evidence of Conformity Location ¹		
	Street Address ⁴		
	Mailing Address (if different from the street address) ⁴		
	Contact Name ¹		
Contact Phone Number ¹			

¹ See instruction pages.

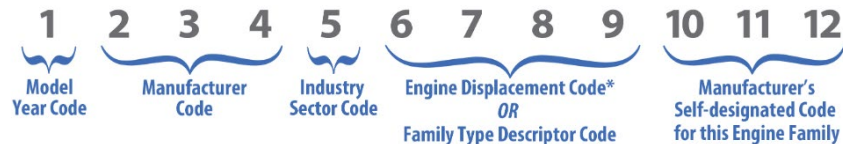
- Form 1 is generally similar to the requirements under ME02
- Engines which are complete and or will have its manufacture completed in accordance with the certificate through the addition of emission control or complete fuel systems
- Generally covers:
 - Importer information
 - Engine information (Manufacture, Make, model, year, family, compliance statement)
 - Machine Information
 - Evidence of Conformity Information

ENGINE INFORMATION

- Engine Family

- A family is a twelve character alphanumeric code that a manufacturer uses for a group of engines, that are similar with respect to their design and emissions characteristics, when applying for certification with the United States Environmental Protection Agency.
- All pertinent family names must be reported if required.

The typical naming convention is shown below, although some sectors have a slight variation.



- Model Year

- The model year is the year determined by the engine manufacturer to designate the period of production of a particular model of an engine.
- Emission standards and test procedures apply per model year.

- Identification Number

- The vehicle identification number and engine identification number are unique codes, including serial numbers, used by manufacturers to act as an identifier for a specific vehicle or engine.
 - No two vehicles or engines have the same identification number.
 - The engine identification number is what is required under the CI-LSI regulations
- The identification number can be found either engraved or stamped on the engine or on a label affixed to the engine.

COMPLIANCE STATEMENT CODES

SWI Code	Description	TID Statement Code
EC05	Engines that bear the national emissions mark	1
EC06	Engines that are covered by a valid U.S. EPA Certificate of Conformity, are sold concurrently in Canada and the U.S. and bear the U.S. EPA emission control information label	2
EC08	Canada-Unique engines, such as engines that are covered by a valid U.S. EPA Certificate of Conformity and are not sold concurrently in Canada and the U.S.	3

EVIDENCE OF CONFORMITY


SWI Code	Description	TID Statement Code
ME07	Importer is able to provide the required evidence of conformity.	1
ME08	Importer has provided the required evidence of conformity to ECCC.	2

SWI Code	Description	TID Statement Code
ME09	The required evidence of conformity is retained at the place of business of the importer provided in SG7.NAD/Part 1 of the Form	1
ME10	The required evidence of conformity is retained at a place of business of the importer other than what is provided SG7.NAD/Part 1 of the Form	2
ME11	The required evidence of conformity is retained at a location other than a place of business of the importer.	3

ALTERNATIVE EMISSION STANDARD

SWI Code	Description	TID Statement Code
ECOE	Compression-ignition engine that powers an emergency machine.	1
ECOF	Compression-ignition engine that is or will be installed in a machine to be used only in a hazardous location where the maximum permissible surface temperature for the machine is 200°C or less.	2
ECOG	Mobile compression-ignition engine that is to be used exclusively to provide a primary source of electrical power in a remote location.	3
ECOH	Mobile compression-ignition engine that is to be used exclusively at a North Warning System site established by the North American Aerospace Defense Command.	4
ECOI	Mobile compression-ignition engine that is used in a transportation refrigeration unit.	5
ECOJ	Stationary compression-ignition engine that is intended to provide electrical power or mechanical work during a power outage.	6
ECOK	Stationary compression-ignition engine that is a fire-pump engine.	7
ECOL	Stationary compression-ignition engine that is to be used in a remote location.	8

ECCC ID FORM 2- ME-01

 Environment and Climate Change Canada / Environnement et Changement climatique Canada		Single Window Initiative Transaction Number (14 digits)		
Importation Declaration Form (Ce formulaire est également disponible en français.)				
Off-road Compression-Ignition (Mobile and Stationary) and Large Spark-Ignition Engine Emission Regulations				
By using this form, the Importer attests that the engine is a replacement engine, defined under subsection 1(1) of the regulations, and was manufactured exclusively to replace the engine of a machine that is located in Canada.		Send completed forms to the Transportation Division, email: infovehiculeetmoteur-vehiculeandengineinfo@ec.gc.ca fax: 819-938-4197 mail: 351 Saint Joseph Blvd, Gatineau QC K1A 0H3		
Part 1: Importer (see instruction pages)				
A) Name of Importer	B) Business Number (9 digits)	C) Phone Number	D) Email Address	
E) Civic Address		F) Mailing Address (if different from the street address)		
Part 2: Imported Products Information (see instruction pages)				
	Product Information	1	2	3
Replacement Engine	Manufacturer			
	Make			
	Model			
	Model Year			
	Type ¹			
	Expected Importation Date (e.g. 31-Dec-2021)			
	Quantity			
	Unique Identification Number(s)			
	Engine Status ¹			
	Evidence of Conformity: The engine is complete and the engine it will replace has been identified.	Evidence of Conformity Statement ¹		
	ECrep File Number ⁵			
	Evidence of Conformity Location ¹			
	Street Address ²			
	Mailing Address (if different from the street address) ²			
	Contact Name ¹			
	Contact Phone Number ¹			
Evidence of Conformity: The engine is incomplete or the engine is complete and the engine it will replace will only be identified after importation.	Application of National Emissions Mark ¹			
	Authorization Number ³			
	Engine Location ¹			
	Address ⁴			
	Description of Measures ¹			
Name of Signee		Date (e.g. 31-Dec-2021)		
		<input type="checkbox"/> I am authorized to report on behalf of the Importer		

¹ See instruction pages.

² If "Evidence of Conformity Location" is 2 or 3, provide the "Street Address" and if applicable "Mailing Address" of the Evidence of Conformity in reference to Part 3: Address table.

³ "Authorization Number" required when "Application of National Emissions Mark" is Yes.

⁴ If "Engine Location" is 2 provide the "Address" of the engine in reference to Part 3: Address table.

⁵ Optional for Importation Declaration.

Replacement engines under the CI-LSI regulations are engines that are manufactured to replace the engine of a machine for which no engine exists that conforms to the applicable standards referred to in sections 10 to 23 of the Regulations; has the physical or performance characteristics necessary for the operation of the machine; and is manufactured by the manufacturer of the original engine or the replacement engine.

An engine is a replacement engine only if it was manufactured to replace the engine of **a machine that is located in Canada** and that, on the day that the replacement engine is installed, had its manufacture completed

in the case of a machine in or on which a mobile engine is installed, 40 years ago or less; or in the case of a machine in or on which a stationary engine is installed, less than 15 years ago.

Replacement engines must bear an engine information label that complies with section 31 of the Regulations.

REPLACEMENT ENGINES

- Importation declarations must be submitted before importation for all replacement engines (exception process code XE06 does not apply)
 - As per section 46 of the Regulations, replacement engines may be stocked.
 - All replacement engines are Canada-unique engines, therefore, evidence of conformity must be submitted before the importation or before affixing the national emissions mark to the engine, or in the case of 153(2), before the engine leaves the possession or control of the company
 - The evidence of conformity must include a copy of the engine information label for the replacement engine, as well as, supporting documentation establishing the applicable standards (currently in the form of a Statement of Compliance Letter- template available at Emission-Verification@ec.gc.ca)
 - Must be submitted to the Vehicles and Engines Testing and Emissions Verification (VETEV) Section at Emission-Verification@ec.gc.ca.
-

REPLACEMENT & CONFORMITY CODES PAIRED WITH ME01

SWI Code	Description	TID Statement Code
ME05	The engine is a replacement and the engine it will replace has been identified	1
ME06	The engine is a replacement and the engine it will replace will only be identified after importation	2
ME05 AND ME03	The engine is incomplete and the engine it will replace has been identified	3
ME06 AND ME03	The engine is incomplete and the engine it will replace will only be identified after importation	4

**MARINE SPARK-IGNITION ENGINE,
VESSEL AND OFF-ROAD
RECREATIONAL VEHICLE EMISSION
REGULATIONS**

(MERV REGULATIONS)

MARINE ENGINE REGULATIONS

- Marine spark-ignition (gasoline) engines are regulated under the [Marine Spark-Ignition Engine, Vessel and Off-Road Recreational Vehicle Emission Regulations](#) (MERV).
 - Marine compression-ignition (diesel) engines that are rated below 37 kW may be regulated under the [Off-road Compression-Ignition \(Mobile and Stationary\) and Large Spark-Ignition Engine Emission Regulations](#) (CI-LSI).
 - Note CI-LSI exclusion 5(1)(k)(iii) are designed to be installed in a vessel that has an integrated fuel, cooling or exhaust system
 - Marine compression-ignition (diesel) engines that are rated at 37 kW or more suggest checking with [Transport Canada](#), on their requirements along with any other requirements under the MERV and CI-LSI.
-

MERV APPLICATIONS

Marine engines of 2012 and later MY and vessels of 2015 and later MY	Off-road recreational vehicles 2012 and later MY
Outboard engines	Snowmobiles
Personal watercraft	Off-road motorcycles
Inboard engines (2013 and later MY for high-performance inboard engines)	All-terrain vehicles (ATV)
Vessels propelled by these engines and outboards, with installed fuel lines or fuel tanks	Utility vehicles

- **Importation Declaration (Section 37 of the MERV)**
 - Due prior to importation (XE-04) unless have meet the requirements of 37(3), import at least 500 of any combination of engines, vessels and vehicles into Canada and have pre-approval for bulk declarations (XE-06).
 - **Model Year (Section 33 of the MERV):**
 - The period of production may include only one January 1st
 - Due June 1 of the following calendar year (eg 2024 MY due June 1st, 2025)
 - Templates available for respective marine and off-road vehicles
-

MERV EMISSION STANDARDS

Table 2: Exhaust emission standards for marine engines

Maximum Engine Power (kW)	Emission Standards (g/kW-hr)		Maximum Allowable Family Emission Limits (g/kW-hr)	
	HC+NO _x	CO	HC+NO _x	CO
Outboards and Personal Watercraft Engines (2012 and later model years)				
P ≤ 4.3	30.0		81.0	
P > 4.3	$2.1 + 0.09 \times (151 + 557/P^{0.9})$		$6.0 + 0.25 \times (151 + 557/P^{0.9})$	
P ≤ 40		500 - (5.0 × P)		650 - (5.0 × P)
P > 40		300		450
Conventional Inboard Engines (2012 and later model years)				
P ≤ 373	5.0	75.0	16.0	150
High-Performance Inboard Engines (2013 and later model years)				
373 < P ≤ 485	16.0	350	n/a	n/a
P > 485	22.0	350	n/a	n/a

P: the maximum engine power rating for the emission family in kW as determined in accordance with CFR 1045.140.

n/a: fleet averaging not applicable for high-performance inboard engines.

Table 3: Exhaust emission standards for off-road recreational vehicles

Emission Standards			Maximum Allowable Family Emission Limits		
HC	HC+NO _x	CO	HC	HC+NO _x	CO
Snowmobiles (g/kW-hr) (2012 and later model years)^a					
$[1-(HC_{std}/150)] \times 100 + [1-(CO_{std}/400)] \times 100 \geq 100$		$[1-(HC_{std}/150)] \times 100 + [1-(CO_{std}/400)] \times 100 \geq 100$	150		400
Off-Road Motorcycles (g/km) (2012 and later model years)^b					
	2.0	25		20.0	50
All-Terrain Vehicles and Utility Vehicles (g/km) (2012 and later model years)^b					
	1.5	35		20.0	n/a

^a The HC and CO standards are based on the formula shown. The *company* selects the HC standard and CO standard so that the combined percent reduction from baseline emission levels is greater than or equal to 100 percent. The selected standard for HC may not exceed 75 g/kW-hr, and the selected standard for CO may not exceed 275 g/kW-hr. For further information, please consult CFR 1051.103(a)(2).

^b Optional standards exist for off-road motorcycles, ATVs and UVs that have small displacement engines. See CFR 1051.615(b) and 1051.615(a). Temporary engine-based standards exist for each of the 2012 to 2014 model years for ATVs and UVs. See CFR 1051.145(b).

REGULATORY REQUIREMENTS

- Importers and manufacturers in Canada must meet certain regulatory requirements, including:
 - Supply engines, vessels or vehicles that comply with the standards
 - Have Prescribed Markings / Labels
 - Submit Importation Declarations
 - Provide End of Model Year Reports
 - Maintain Evidence of Conformity
 - Provide Maintenance Instructions
 - Defect Information
 - Maintenance and Submission of Records
-

	Canadian Engine, Vessel or Vehicle Manufacturer	Canadian Engine, Vessel or Vehicle Distributor	Engine, Vessel or Vehicle Importer for the Purpose of Sale	Engine, Vessel of Vehicle Importer for Other Purposes	Section in CEPA or Regulations (MERV)
Company under CEPA	✓	✓	✓		149 CEPA
Affix the NEM	✓	✓ a			150-152 CEPA 6-7 MERV
Supply engines, vessels or vehicles that comply with standards	✓	✓	✓	b	153-154 CEPA 9-32 MERV
Maintain evidence of conformity	✓	✓	✓ c	b	153-154 CEPA 35-36 MERV
Submit an importation declaration			✓	✓ d	153-154 CEPA 37 MERV
Affix prescribed labels to engines, vessels or vehicles	✓	✓	✓	✓	153-154 CEPA 5, 7, 8, 18, 35, 37, 41, 42 MERV
Provide maintenance instructions	✓	✓	✓ c		153 CEPA 34 MERV
Cause notice of defect to be given, if necessary	✓	✓ a	✓		157 CEPA 43 MERV
Affix engine, vessel or vehicle identification number	✓	✓	✓ e		153-154 CEPA 8 MERV
Submit end of model year report	✓	✓	✓		162 CEPA 33 MERV

a – Unless already affixed by the manufacturer

b – The presence of the prescribed label on the engine, vessel or vehicle is considered to be evidence that the engine, vessel or vehicle conforms to the prescribed emission standards when it is imported by a person for purposes other than sale.

c – The *company* may arrange with the engine, vessel or vehicle manufacturer that certain required information be provided by the engine, vessel or vehicle manufacturer on behalf of the *company*.

d – A person who is not a *company* under CEPA, and who imports at most 10 of any combination of engines, vessels and vehicles, is not required to submit an importation declaration.

e – Unless already affixed by the manufacturer or distributor.

IMPORTATION DECLARATIONS

- The Importation Declaration, pursuant to section 37, may be provided in one of three ways:
 - Transactional importation declarations (ID) submitted directly to ECCC prior to importation.
 - Single Window Initiative Integrated Importation Declaration (SWI IID) submitted to Canada Border Service Agency (CBSA). Using a single electronic portal, the SWI incorporates ECCC's importation declaration requirements with the data elements required by CBSA and other government programs in an IID.
 - Bulk importation declarations submitted directly to ECCC on a periodic basis (for companies that import at least 500 of any combination of marine engines, vessels, or off-road recreational vehicles in a calendar year). Please note that to use this method the company is required to submit a notice of intent to ECCC and be approved to submit declarations on a periodic basis.
 - Products should only be declared through one submission method.
 - ECCC follows-up with the regulatees to reconcile their Importation Declarations when received through multiple channels, usually at the beginning of the new Calendar Year.
 - For SWI submissions, these may be grouped and processed periodically by ECCC.
 - Information to be provided is generally the same regardless of method.
-

MERV EXCEPTION CODES

- XE04 – subject to the MERV regulations
- XE06 – subject to the regulations however importer is approved for bulk importing and will report this engine, vessel or vehicle via their bulk report
- XE4N – subject to the regulations, is importing 10 or less engines in a calendar year for personal use (i.e. not for sale).
- XE99 – *not* subject to any of the Vehicle and Engine Emission Program regulations

Note: commodity unit count is a required field under all exception process codes.

VEHICLE/VESSEL/ENGINE INFORMATION

- Vehicle/Vessel Information

- Manufacturer, Make, Model, Model Year,

- Class

- Inboard Engine (EC44)
- Outboard Engine (EC45)
- Personal Watercraft Engine (EC46)
- Vessel with Installed Marine Engine (EC25)*

**Note: For vessels with installed marine engines, the coded class of the engine and associated engine information must be provided, in the appropriate engine fields, under the same commodity.*

- Vessel without Marine Engine (EC26)
- Snowmobile (EC27)
- All-Terrain Vehicle (EC28)
- Utility Vehicle (EC29)
- Off-Road Motorcycle (EC31)

- Quantity, Compliance Statement, Date of Importation

- Model Year

- The model year is the year determined by the vehicle or engine manufacturer to designate the period of production of a particular model of a vehicle or engine.
- Emission standards and test procedures apply per model year.

- Vehicle and Engine Family (needed for End of Model Year Reports)

- A family is a twelve character code that a manufacturer uses for a group of vehicles or engines, that are similar with respect to their design and emissions characteristics, when applying for certification with the United States Environmental Protection Agency.

COMPLIANCE STATEMENTS

SWI Code	Description	TID Statement Code
EC13	Vessels/Vehicles that bear the national emissions mark	1 (company) 4 (personal)
EC14	Vessels/Vehicles that are covered by a valid U.S. EPA Certificate of Conformity, are sold concurrently in Canada and the U.S. and bear the U.S. EPA emission control information label	2 (company) 5 (personal)
EC15	Canada-Unique Vessels/Vehicles, such as vessels/vehicles that are covered by a valid U.S. EPA Certificate of Conformity and are not sold concurrently in Canada and the U.S.	3 (company) 6 (personal / CARB) 7 (personal)
EC16	INCOMPLETE Vehicles / Vessels	8
EC19	Marine Engines that bear the national emissions mark	1 (company) 4 (personal)
EC20	Marine Engines that are covered by a valid U.S. EPA Certificate of Conformity, are sold concurrently in Canada and the U.S. and bear the U.S. EPA emission control information label	2 (company) 5 (personal)
EC21	Canada-Unique Marine Engines, such as engines that are covered by a valid U.S. EPA Certificate of Conformity and are not sold concurrently in Canada and the U.S.	3 (company) 6 (personal / CARB) 7 (personal)
EC22	INCOMPLETE Engines	8

REPLACEMENT ENGINES

- Under section 18 of the Regulations, a replacement engine is an engine manufactured exclusively to replace an engine used to propel a vessel if no current model year engine exists that has the characteristics necessary for the propulsion of the vessel.
 - A replacement engine may conform to the standards specified in subsection 18(2) of the Regulations, which are different from those prescribed in sections 13 to 17 of the Regulations.
 - Replacement engines are usually in-board marine engines, as outboard engines are easily interchangeable and a current model year can easily be found.
 - The *company* must affix a label to a replacement engine. Under subsection 18(3) of the Regulations, this label must meet the following:
 - requirements set out for a label under subsections 7(3) and (4), and indicate, in both official languages, that the engine is a replacement engine; or
 - requirements set out in CFR 1068.240(b)(6).
-

OFF-ROAD SMALL SPARK-IGNITION ENGINE EMISSION REGULATIONS (SSI REGULATIONS)

SSI REGULATIONS APPLY TO ENGINES RATED UP TO 30KW (~40HP) AND ≤ 1,000 CC

Engines can be found in numerous applications:

Lawn and garden equipment

- Hedge trimmers
- String trimmers
- Mowers
- Brush cutters
- Snowblowers
- Pressure washers

Industrial Machines

- Portable gen-sets
- Pumps
- Mixers

Forestry

- Chain saws
- Chippers
- Tillers
- Log splitters



Regarding the CI-LSI Regulations, spark-ignited engines that have a displacement of 1 000 cm³ or less, a gross engine power of 30 kW or less and meet the requirements that are applicable under the Off-Road Small Spark-Ignition Engine Emission Regulations to an engine of the same model year that is designed to be used in a non-handheld machine can default to the SSI Regulations. One way to differentiate if the spark-ignited engine is an SSI or an LSI is from the fifth character in the US EPA Engine Family, where S represents SSI engines and B represents LSI engines.

SSI STANDARDS ALIGN WITH US EPA'S PHASE 3 STANDARDS

- Phase 3 Exhaust Emission Standards (CFR 1054 and 1051)

Engine Class	Engine Type	Engine Displacement (cm3)	Effective date (MY)	Standards HC+NOx (g/kW-hr)	Standards CO (g/kW-hr)
I	Non-handheld	<250	2019+	10.0	610
II	Non-handheld	>=250	2019+	8.0	610
III	Handheld	<20	2019+	50	805
IV	Handheld	>=20 and <50	2019+	50	805
V	Handheld	>=50	2019+	72	603
Bicycle engine	--		2019+	2.0 (g/km)	25 (g/km)

- Evaporative Emission Standards (CFR 1060)

Engine Class	Engine Type	Fuel Line (g/m2/day)	Effective date (MY)	Fuel Tank (g/m2/day) @ 28C	Fuel Tank (g/m2/day) @ 40C
I-II	Non-handheld	15	2019+	1.5	2.5
III-V	Handheld	15 (225 cold)	2019+	1.5	2.5
Bicycle engine	--	15	2019+	1.5	2.5

REGULATORY REQUIREMENTS

- Importers and manufacturers in Canada must meet certain regulatory requirements, including:
 - Supply engines that comply with the standards
 - Have Prescribed Markings / Labels
 - Submit Importation Declarations (if an importer)
 - Maintain Evidence of Conformity
 - Provide Maintenance Instructions
 - Defect Information
 - Maintenance and Submission of Records
-

IMPORTATION DECLARATIONS

- The Importation Declaration, pursuant to section 19, may be provided in one of three ways:
 - Transactional declarations submitted directly to ECCC upon importation.
 - Annual declarations submitted directly to ECCC (for companies that import over 50 engines per calendar year) before February 1 of the following Calendar Year.
 - Single Window Initiative Integrated Importation Declaration (SWI IID) submitted to Canada Border Service Agency (CBSA). Using a single electronic portal, the SWI incorporates ECCC's importation declaration requirements with the data elements required by CBSA and other government programs in an IID.
 - Products should only be declared through one submission method.
 - ECCC follows-up with the regulatees to reconcile their Importation Declarations when received through multiple channels, usually after the February 1st reporting deadline.
 - Information to be provided is generally the same regardless of method.
-

ECCC SSI ID FORM



Environment and
Climate Change Canada

Environnement et
Changement climatique Canada

Importation declaration form Ce formulaire est également disponible en français.

Off-Road Small Spark-ignition Engine Emission Regulations

<p>You must send us a signed importation no later than February 1 of the calendar year following the calendar year during which the importation occurred.</p> <p>You may use this form to declare the products. Instructions for completing this form are on the last page.</p>	<p>Send completed Importation declaration to the Regulatory Administration Section of the Transportation Division.</p> <p>email: ec.vehicleandengineinfo.ec@canada.ca fax: 819-938-4197 mail: 351 Saint Joseph Blvd., Gatineau QC K1A 0H3</p>
---	---

<p>Regulated products include off-road small spark-ignition engines used in machines, such as:</p> <ul style="list-style-type: none"> • Lawn and garden machines • Light-duty industrial machines • Light-duty logging machines • Bicycle engines • Loose engines 	<p>Excluded products:</p> <ul style="list-style-type: none"> • Engines over 19 kW of power • Others (see page 28 in the guidance document) (http://publications.gc.ca/site/eng/9.843015/publication.html)
--	---

Part 1: Importer

A) Name of importer	B) Business number (nine digits)	C) Phone number	D) Email address
E) Civic address		Mailing address (if different from the civic address)	

Part 2: Imported products information (see last page for instructions)

Engine							Machine (if applicable)				
Manufacturer	Make	Model	Model year	Emission families		Quantity	Compliance statement number*	Manufacturer	Make	Model	Type
				Exhaust / engine family	Evaporative family						

*see Instructions section for options

Add extra products table

Signature: 	Name of Signee:	Date (e.g. 01-Jan-2018):
----------------	-----------------	--------------------------

SSI EXCEPTION CODES

- XE03 – subject to the regulations
- XE3N – subject to the regulations however non-commercial (e.g. not for sale) or commercial imports (e.g. for sale) and will import 49 engines or less.
- XE07 – subject to the regulations but will provide annual ID report on or before February 1st for the previous calendar year's imports
- XE99 – *not* subject to any of the Vehicle and Engine Emission Program regulations

Note: commodity unit count is a required field under all exception process codes.

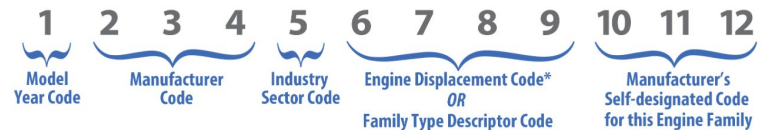
ID INFORMATION

- Engine and Evaporative Families (Emission Families)

- A family is a twelve character code that a manufacturer uses for a group of vehicles or engines, that are similar with respect to their design and emissions characteristics, when applying for certification with the United States Environmental Protection Agency.
 - Many terms for family are used including, but not limited to, engine family, evaporative family and test group.
- A vehicle or engine with a complete fuel system may have multiple families for exhaust and evaporative certification requirements.
 - All pertinent emission family names must be reported if required.
- The 5th character in the Emission can help determine which regulations the import is regulated under:
 - [Information about Family Naming Conventions for Vehicles and Engines](#)
 - **S = SSI**; **B = LSI**; M = MERV (Marine Spark Ignition Engines); X = MERV (ATV, UTV, off-road motorcycles); Y = MERV (Snowmobiles); **P = Permeation / Evaporative Family**; etc.

- Engine and Machine information

- Manufacturer, Make and Model
- SWI IID has the Engine Classes as:
 - Off-Road Spark-ignition – Loose (EC22)
 - Off-Road Spark-ignition – Installed (EC23)
 - Off-Road Spark-ignition – Replacement (EC24)



- Model Year

- The model year is the year determined by the engine manufacturer to designate the period of production of a particular model of a vehicle or engine.
- Emission standards and test procedures apply per model year.
- The 1st character of the Exhaust Emission Family can help determine the MY of the engine

- Compliance Statement

COMPLIANCE STATEMENTS

SWI Code	Description	TID Statement Code
EC05	Engines that bear the national emissions mark	1
EC10	Engines that are covered by a valid U.S. EPA Certificate of Conformity, are sold concurrently in Canada and the U.S. and bear the U.S. EPA emission control information label	2
EC11	Canada-Unique engines, such as engines that are covered by a valid U.S. EPA Certificate of Conformity and are not sold concurrently in Canada and the U.S.	3
EC12	Incomplete Engine - The Affirmation of Statement Compliance of Incomplete Engines, code EC12, must be provided for Incomplete Engines	4

REPLACEMENT ENGINES

- Under 13(1), **replacement engine** means an engine manufactured exclusively to replace an engine in a machine for which no current model year engine with the physical or performance characteristics necessary for the operation of the machine exists.
 - You must submit evidence of conformity before the importation of the engine or before affixing the national emissions mark to the engine. The evidence of conformity must include a copy of the engine information label for the replacement engine as well as supporting documentation to demonstrate the determination of the applicable standards.
 - The evidence of conformity must be submitted to the Vehicles and Engines Testing and Emissions Verification (VETEV) Section at Emission-Verification@ec.gc.ca.
 - The engine must comply with applicable emission standards.
 - 13(3) The engine must bear a label that meets the requirements under 13(3).
-

ON-ROAD VEHICLE AND ENGINE EMISSION REGULATIONS (ORVEER)

HEAVY-DUTY VEHICLE AND ENGINE GREENHOUSE GAS EMISSION REGULATIONS (HDVEEGE R/HDV GHG)























ORVEER – HDV IMPORTATION DECLARATIONS (ID)

The ORVEER made under the [Canadian Environmental Protection Act, 1999](#) (CEPA):

- Establishes emission standards for air pollutants and toxic substances from 2004 and later model year passenger cars, light-duty trucks, motorcycles, heavy-duty vehicles and their engines (such as highway tractors, buses and dump trucks).

- Heavy-duty vehicle means an on-road vehicle that has a GVWR of more than 3 856 kg (8,500 lb).
- Heavy-duty engine means an engine designed to be used for motive power in a heavy-duty vehicle, other than a medium-duty passenger vehicle, Class 2B vehicle or Class 3 vehicle.

Weight Classes Defined in the Regulations

Class	GVWR (lb)	Vehicle Examples			
2B	8 501 to 10 000	 Utility van	 Full-size pick-up	 Step van	
3	10 001 to 14 000	 Walk-in	 Conventional van	 City delivery	
4	14 001 to 16 000	 Large van	 Motorhome	 City delivery	
5	16 001 to 19 500	 Large walk-in	 City delivery	 Bucket	
6	19 501 to 26 000	 Motorhome	 School bus	 Rack	
7	26 001 to 33 000	 Furniture	 City bus	 Medium conventional	
8	33 000 +	 Dump	 Cement	 Heavy conventional	 COE sleeper

ORVEER –HDV ID

- Subsection [39.1 \(1\)](#) of the ORVEER, states that any company that intends to import a heavy-duty vehicle or a heavy-duty engine during a given calendar year shall submit, prior to the first importation of the vehicle or engine during that calendar year, a declaration to the Minister (i.e. our office).
- Subsection [40 \(1\)](#) of the ORVEER, states a person that is not a company and that intends to import a vehicle or engine shall submit, prior to the importation, a declaration to the Minister in a form and manner that is satisfactory to the Minister.
 - 40 (2) A person that is not a company and that imports no more than 10 engines or no more than 10 vehicles in a calendar year is exempt from the obligation of submitting the declaration to the Minister.
- Other sections of interest of ORVEER to importers of on-road HDVs are:
 - 41 (1)
 - 42
 - 42.1

ORVEER – HDV ID THROUGH SWI

SWI TRANSACTION NUMBER	MANUFACTURER	MAKE	MODEL	MODEL YEAR	QUANTITY
------------------------	--------------	------	-------	------------	----------

STATEMENT	CLASS	VIN	REPORT DATE	EXPECTED IMPORTATION DATE
-----------	-------	-----	-------------	---------------------------

- Under the Exception Process Code XE01, we need:
 1. Transaction Number
 - SWI Transition Number
 2. Vehicle/Engine Manufacturer
 - Ex: Volvo/Ford/ PACCAR/Kenworth/Freightliner
 3. Vehicle/Engine Make *(can be the same as the manufacturer)*
 - Ex: Ford/Mack
 4. Vehicle/Engine Model
 - Ex: F-450/LR64
 5. Vehicle/Engine Model Year
 6. Quantity *(must be 1)*
 7. Vehicle ID Number
 - 17digit VIN number ex:1VXBR12EXCP901213
 8. Importation Date
 9. Compliance Statement Code
 10. Vehicle/Engine Class Name

ORVEER – HDV ID THROUGH SWI

- **Compliance Statement Codes**

- **[EC01 or 1]:** The vehicle / engine bears the national mark. *Please note that only companies that have received authorization from Environment and Climate Change Canada can affix the national mark on their vehicles / engines.*
- **[EC02 or 2]:** The vehicle / engine is certified compliant covered by a valid certificate of compliance from the US Environmental Protection Agency (EPA), is sold simultaneously in the Canadian and US market, and bears the control information label of EPA emissions.
- **[EC03 or 3]:** The vehicle / engine is exclusive to Canada. This may be a product with or without an EPA Certificate of Conformity, but which is not sold simultaneously in both countries, or a vehicle / engine that is not covered by a certificate from the EPA. *This statement implies that a letter from ECCC acknowledging that the product information meets the requirements of paragraph 153 (1) (b) of CEPA has already been received by the importer.*
- **[EC04 or 4]:** The vehicle / engine is not complete, but will be completed according to the manufacturer's instructions and will comply with the standards prescribed by the Regulations when completed.

- **Vehicle Class Name**

- EC09 (Heavy-Duty Class 2B Vehicles)
- EC10 (Heavy-Duty Class 3 Vehicles)
- EC11 (Heavy-Duty Vocational Vehicles)
- EC12 (Heavy-Duty Tractors)

- **Engine Class Name**

- EC14 (Heavy-duty engine- loose)
- EC34 (Heavy-duty engine –incomplete)

ORVEER – HDV ID THROUGH SWI

COMMON ERRORS

Vehicle Class Name

- Medium-Duty Passenger Vehicles (MDPV) has a GVWR of < 4 536 kg (10,000 lb) and that is designed primarily for the transportation of persons but **does not include any vehicle that:**
 - (a) is a truck that is incomplete because it does not have a primary load carrying device or container attached;
 - (b) has a seating capacity of more than 12 persons;
 - (c) is designed to seat more than 9 persons behind the driver; or
 - (d) is equipped with an open cargo area (for example, a pick-up truck box or bed) of 183 cm (72 in.) in interior length or more or with a covered box not readily accessible from the passenger compartment.

Exception process codes not valid for HDV

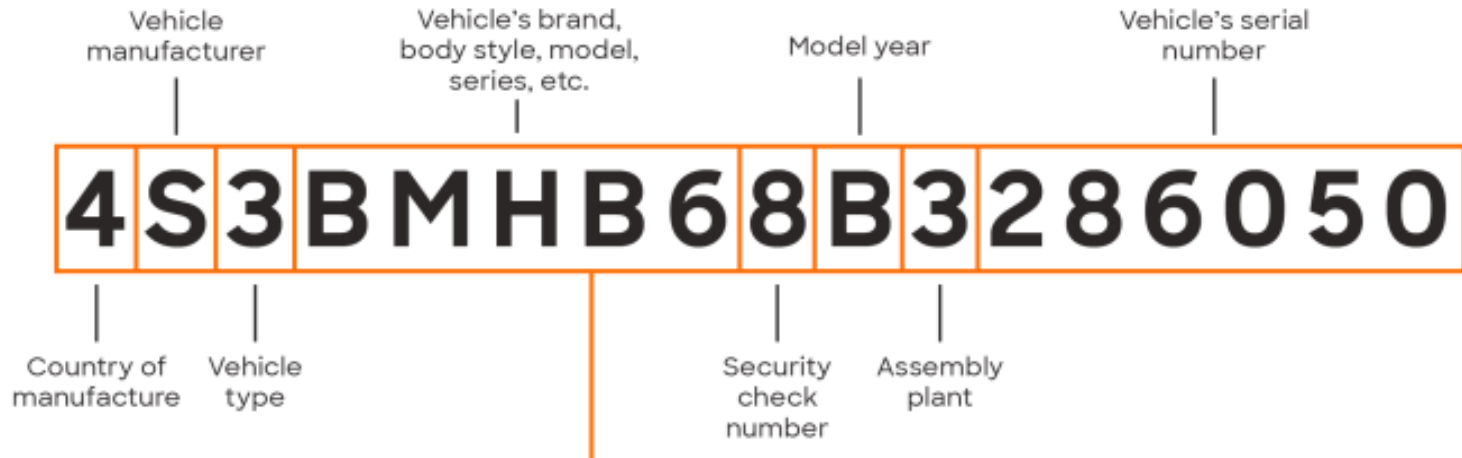
- **XE06** - "Bulk"
- **XE99** - "Unregulated"

ORVEER – HDV ID THROUGH SWI

COMMON ERRORS

Vehicle Identification Number (VIN)

- A VIN is composed of 17 characters (digits and capital letters) that act as a unique identifier for the vehicle. A VIN displays the car's unique features, specifications and manufacturer. (see photo below)
- Common errors include:
 - Duplicate VINs
 - VINs with invalid numbers or letters
 - Model years not matching up with the model year in the VIN (10th position)



HEAVY-DUTY VEHICLE AND ENGINE GREENHOUSE GAS REGULATIONS (HDVEGGER)

- ECCC also administers the HDVEGGER/HDV GHG regulations under the [Canadian Environmental Protection Act, 1999](#) (CEPA):
 - This regulation establishes emission standards for greenhouse gases from 2014 and later model year heavy-duty vehicles and heavy-duty engines (highway tractors, buses and dump trucks and their engines)
 - **Vehicle Standards (Class 2B to Class 8 Vocational)**
 - CO2 standard based on vehicle class and vehicle type
 - Compliance is assessed with U.S. EPA computer simulation model (GEM) (vocational and tractor)
 - Compliance assessed on a chassis dyno (2B/3 non-vocational)
 - **Engine Standards**
 - Separate standards for engines installed in vocational and tractors
 - Standards based on engine type (CI/SI) and engine class
 - Emissions measured on engine dyno
-

CO2 EMISSION CREDIT SYSTEM (HDVEGGER)

- Companies have the option to comply with the CO2 emission standards by using the CO2 emission credit system
 - Companies can generate, bank and trade emission credits
 - Credits are calculated in units of megagrams (Mg) of CO2 for each averaging set using formulas in section 35 of the Regulations
 - Credits can be banked for 5 years
 - Deficits must be offset in 3 years
-

END OF MODEL YEAR REPORT (HDVEGGER)

- All regulated companies are required to submit an end-of model year report each model year
 - Reports are due no later than June 30th following the model year.
 - Reports are completed using ECCC template.
 - Templates available on the Vehicle and Engine Emissions Electronic Reporting Registry (VEERR) or via email.
 - Companies are encouraged to submit reports using VEERR. Reports submitted by email are also accepted.
-

ENFORCEMENT OF THE VEHICLE AND ENGINE REGULATIONS

ENFORCEMENT OF THE REGULATIONS

- It is the responsibility of those importing a regulated product into Canada, or the company manufacturing such a product in Canada, to ensure that they meet the applicable emission standards and that the administrative requirements are satisfied. Failure to comply with the regulations is a punishable offence. Individuals or companies who do not meet the requirements of the regulations may be subject to the following enforcement policy and regulations:
 - The Compliance and Enforcement Policy: <https://www.canada.ca/en/environment-climate-change/services/canadian-environmental-protection-act-...>
 - The *Environmental Violations Administrative Monetary Penalties Regulations*: <https://laws-lois.justice.gc.ca/eng/regulations/SOR-2017-109/page-1.html>
-

CLOSING REMARKS

- Consolidated regulations along with fact sheets, technical guidance documents and reporting templates are available on the *Canadian Environmental Protection Act, 1999* Registry. Links to the registry and other useful webpage are included on the following slides.
 - If you have any further questions, please do not hesitate to contact us
 - General Inquiries, Corrections and Reporting:
 - VehicleandEngineInfo@ec.gc.ca
 - Evidence of Conformity (including Canada Unique) and Emission Verification Testing:
 - Emission-Verification@ec.gc.ca
-

USEFUL LINKS

Canada Border Services Agency Memorandum D19-7-4

- Importation of Engines, Vehicles, Vessels and Machines: <https://www.cbsa-asfc.gc.ca/publications/dm-md/d19/d19-7-4-eng.html>

Canadian Environmental Protection Act, 1999

- Part 7, Division 5 - Vehicle, Engine and Equipment Emissions: <https://www.canada.ca/en/environment-climate-change/services/canadian-environmental-protection-act-registry/publications/canadian-environmental-protection-act-1999/part-7.html#t5>
- Part 10 - Enforcement: <https://www.canada.ca/en/environment-climate-change/services/canadian-environmental-protection-act-registry/publications/canadian-environmental-protection-act-1999/part-10.html>
 - Compliance and Enforcement Policy: <https://www.canada.ca/en/environment-climate-change/services/canadian-environmental-protection-act-registry/publications/compliance-enforcement-policy.html>
 - Environmental Violations Administrative Monetary Penalties Regulations: <https://laws-lois.justice.gc.ca/eng/regulations/SOR-2017-109/page-1.html>

ECCC Transportation Division Google Drive

- Access to importation declaration templates and guidance documents for on/off-road regulations: <https://drive.google.com/drive/folders/1qx8Aqfm4oSdDfi4rgiT8vP1yNExGJW1>

ECCC Transportation Division's Notice of Defect Handbook

- Handbook: <https://www.canada.ca/en/environment-climate-change/services/canadian-environmental-protection-act-registry/publications/notice-defect-handbook.html>
-

USEFUL LINKS

Off-Road Small Spark-Ignition Engine Emission Regulations

- CEPA Registry: <https://pollution-waste.canada.ca/environmental-protection-registry/regulations/view?Id=61>
- Read the regulations: <https://laws-lois.justice.gc.ca/eng/regulations/SOR-2003-355/index.html>

Marine Spark-Ignition Engine, Vessel and Off-Road Recreational Vehicle Emission Regulations

- CEPA Registry: <https://pollution-waste.canada.ca/environmental-protection-registry/regulations/view?Id=85>
- Read the regulations: <https://laws-lois.justice.gc.ca/eng/regulations/SOR-2011-10/index.html>

On-Road Vehicle and Engine Emission Regulations

- CEPA Registry: <https://pollution-waste.canada.ca/environmental-protection-registry/regulations/view?Id=46>
- Read the regulations: <https://laws-lois.justice.gc.ca/eng/regulations/SOR-2003-2/index.html>

Passenger Automobile and Light Truck Greenhouse Gas Emission Regulations

- CEPA Registry: <https://pollution-waste.canada.ca/environmental-protection-registry/regulations/view?Id=104>
- Read the regulations: <https://laws-lois.justice.gc.ca/eng/regulations/SOR-2010-201/index.html>

Heavy-duty Vehicle and Engine Greenhouse Gas Emission Regulations

- CEPA Registry: <https://pollution-waste.canada.ca/environmental-protection-registry/regulations/view?Id=119>
- Read the regulations: <https://laws-lois.justice.gc.ca/eng/regulations/SOR-2013-24/index.html>

Off-road Compression-Ignition (Mobile and Stationary) and Large Spark-Ignition Engine Emission Regulations

- CEPA Registry: <https://pollution-waste.canada.ca/environmental-protection-registry/regulations/view?Id=1160>
 - Read the regulations: <https://laws-lois.justice.gc.ca/eng/regulations/SOR-2020-258/index.html>
-